

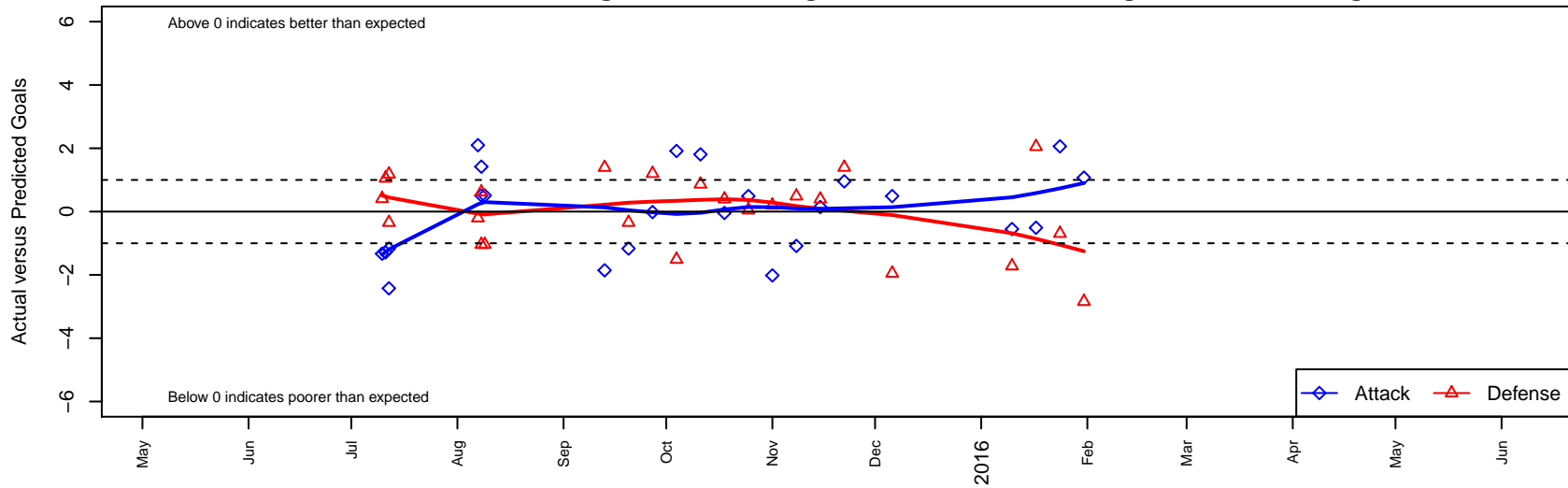
# FME Xtreme B00

Fife Milton Edgewood SC  
 Milton, WA  
 B00 total strength=1115  
 attack=3.62 defense=2.46  
 fall league = NPSL Div 3 U15

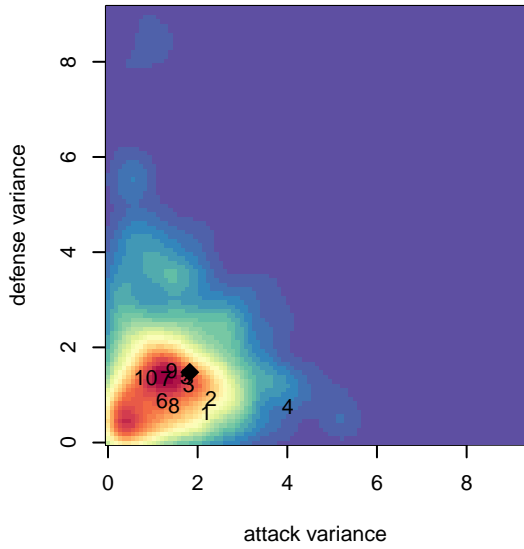
alt names used:  
 FME Xtreme '00  
 FME Xtreme 00  
 FME Xtreme

Venues played:  
 2015 KCC BU15  
 2015 Blast Off BU15 B  
 2015 NPSL Division 3 U15  
 2015 Founders Cup B00

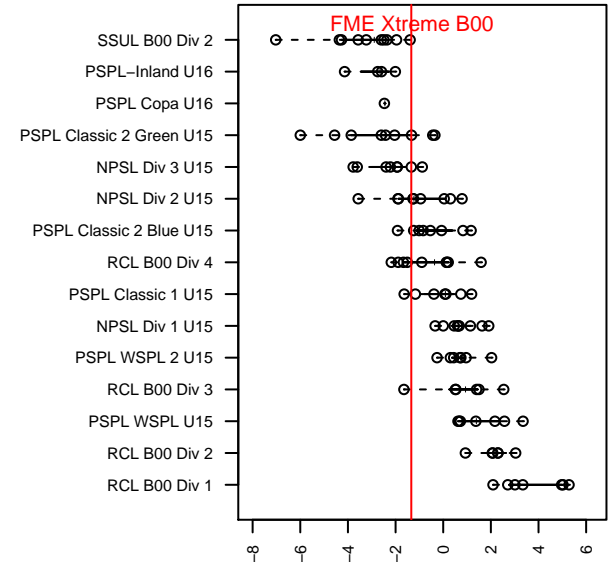
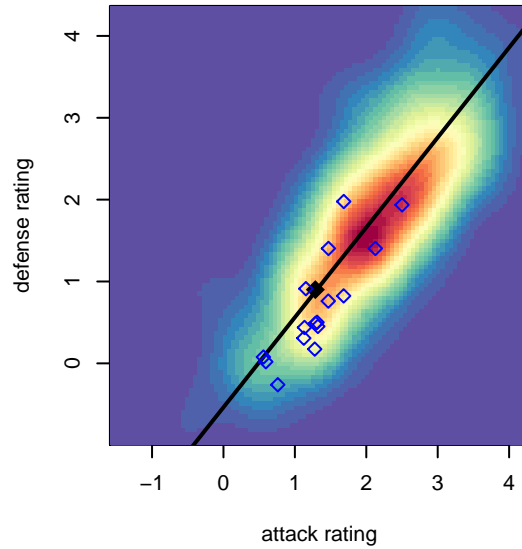
**FME Xtreme B00**  
 Dots are actual minus expected GF (blue circles) and GA (red triangles).  
 Blue line is smoothed change in attack strength. Red is smoothed change in defense strength.



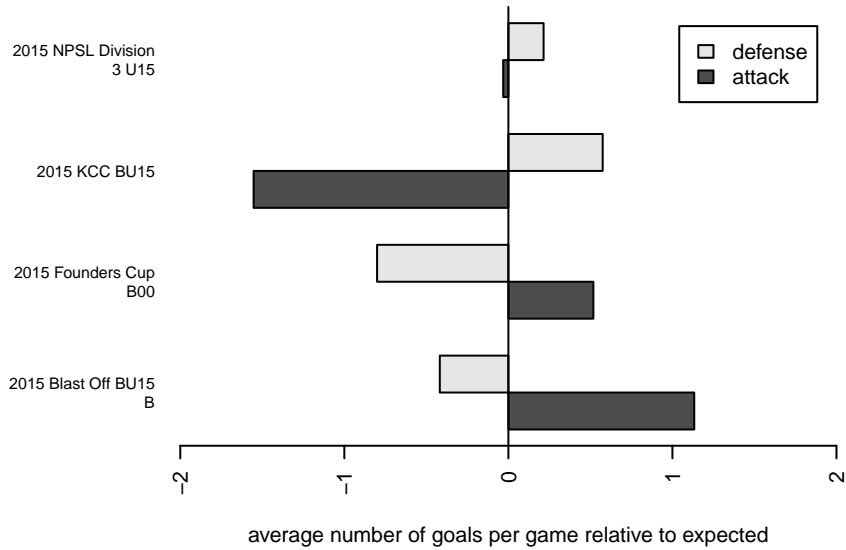
**attack and defense variance (black dot)  
relative to other teams  
and top 10 in region**



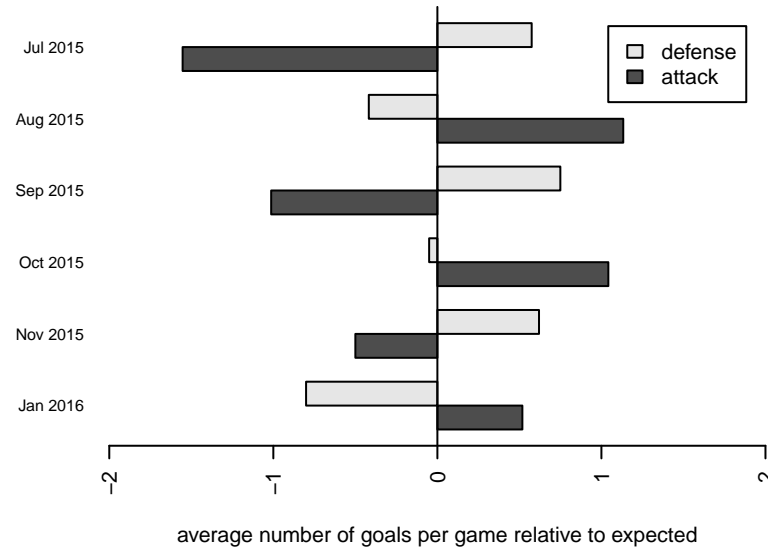
**attack and defense rating  
relative to others at age  
and all opponents in last 13 months**



**Performance relative to 13 month average**



**Performance relative to 13 month average**



date	home		away		venue	pred.home	pred.away
2016-01-31	Seattle United S Black B00	6	FME Xtreme B00	2	2015 Founders Cup B00	3.16	0.93
2016-01-24	FME Xtreme B00	4	Snohomish United Red B00	2	2015 Founders Cup B00	1.94	1.31
2016-01-17	Newport FC Cosmos B00	0	FME Xtreme B00	1	2015 Founders Cup B00	2.05	1.51
2016-01-10	Seattle United NE Blue B00	6	FME Xtreme B00	0	2015 Founders Cup B00	4.28	0.55
2015-12-06	Newport FC Cosmos B00	4	FME Xtreme B00	2	2015 NPSL Division 3 U15	2.05	1.51
2015-11-22	BYSC Select B00	0	FME Xtreme B00	3	2015 NPSL Division 3 U15	1.40	2.04
2015-11-15	FME Xtreme B00	3	Lake Hills Destroyers B00	1	2015 NPSL Division 3 U15	2.86	1.39
2015-11-08	ISC Gunners Select B00	1	FME Xtreme B00	1	2015 NPSL Division 3 U15	1.49	2.08
2015-11-01	Kent United White B00	1	FME Xtreme B00	0	2015 NPSL Division 3 U15	1.20	2.02
2015-10-25	FME Xtreme B00	2	Newport FC Cosmos B00	2	2015 NPSL Division 3 U15	1.51	2.05
2015-10-18	FME Xtreme B00	2	BYSC Select B00	1	2015 NPSL Division 3 U15	2.04	1.40
2015-10-11	FME Xtreme B00	6	Mercer Island FC Gunners B00	0	2015 NPSL Division 3 U15	4.19	0.86
2015-10-04	FME Xtreme B00	4	ISC Gunners Select B00	3	2015 NPSL Division 3 U15	2.08	1.49
2015-09-27	FME Xtreme B00	2	Kent United White B00	0	2015 NPSL Division 3 U15	2.02	1.20
2015-09-20	Seattle United Shoreline White B00	1	FME Xtreme B00	2	2015 NPSL Division 3 U15	0.65	3.17
2015-09-13	Lake Hills Destroyers B00	0	FME Xtreme B00	1	2015 NPSL Division 3 U15	1.39	2.86
2015-08-09	FME Xtreme B00	1	Southlake Select Eagles Red B00	3	2015 Blast Off BU15 B	0.49	1.96
2015-08-08	FME Xtreme B00	5	FWFC Sharks B00	0	2015 Blast Off BU15 B	3.58	0.62
2015-08-08	Southlake Select Eagles Red B00	3	FME Xtreme B00	1	2015 Blast Off BU15 B	1.96	0.49
2015-08-07	FME Xtreme B00	3	UPSC Lightning B00	2	2015 Blast Off BU15 B	0.90	1.80
2015-07-12	FME Xtreme B00	0	SGESC Fusion Red B00	0	2015 KCC BU15	2.42	1.18
2015-07-12	FME Xtreme B00	2	Seattle United Shoreline White B00	1	2015 KCC BU15	3.17	0.65
2015-07-11	FME Xtreme B00	0	Crossfire Yakima B00	0	2015 KCC BU15	1.29	1.05
2015-07-10	Crossfire Select Buckley B00	1	FME Xtreme B00	0	2015 KCC BU15	1.41	1.33